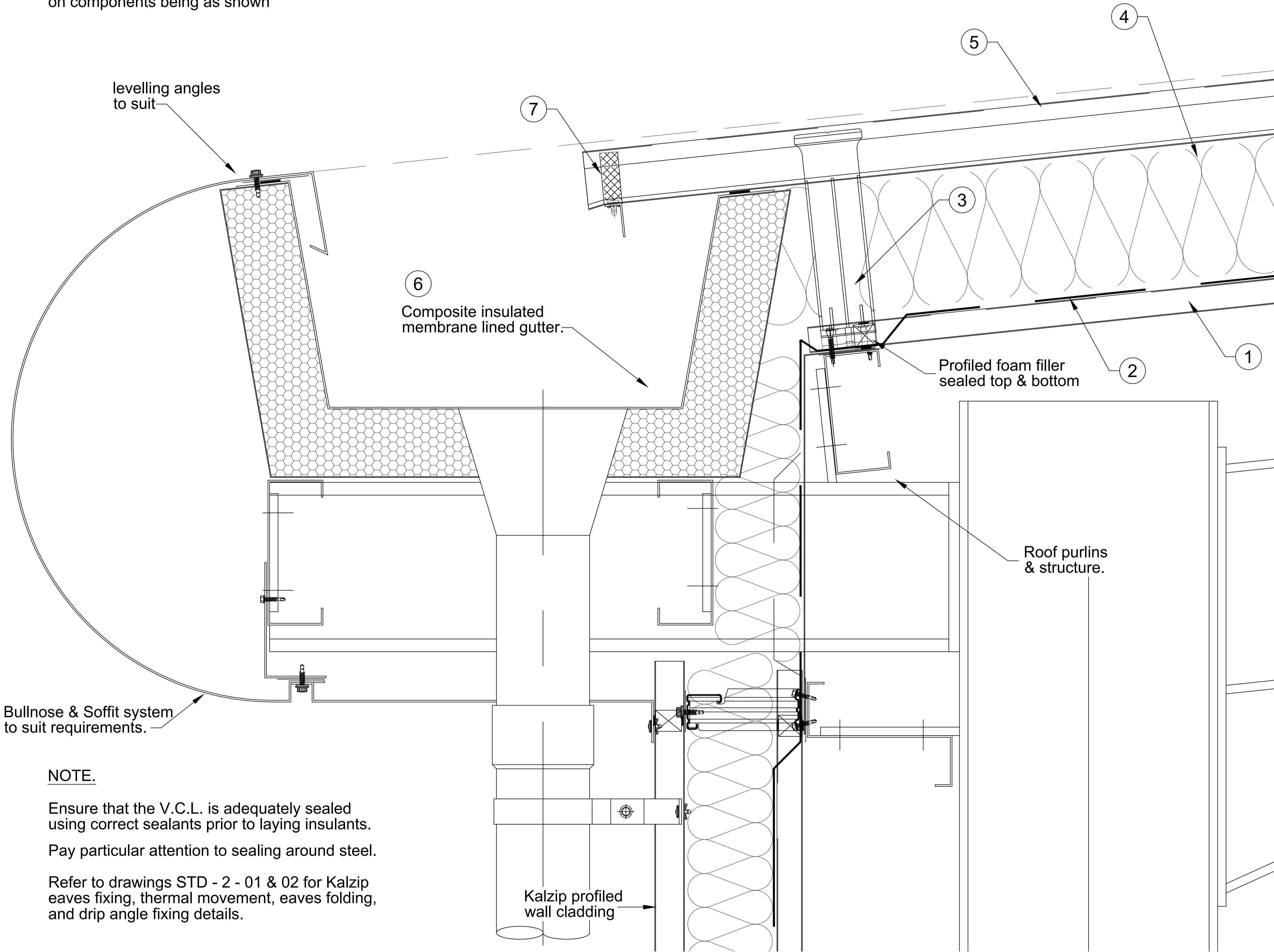


Wall construction to achieve minimum U-value of 0.35 W/m² K

Ensure that steelwork outriggers are wrapped with insulation to reduce cold bridge.

Stated calculation results are dependent on components being as shown



NOTE.

Ensure that the V.C.L. is adequately sealed using correct sealants prior to laying insulants.

Pay particular attention to sealing around steel.

Refer to drawings STD - 2 - 01 & 02 for Kalzip eaves fixing, thermal movement, eaves folding, and drip angle fixing details.

Notes

1. All Dims in mm Unless Otherwise Stated
 2. Do Not Scale From This Drawing
 3. Isolate All Dissimilar Materials With Barrier Tape
 4. If in Doubt, ASK
-
- ① Kalzip LINER SHEET
Kalzip Liner TR 35/200S (Finish Colour Etc TBC)
 - ② Kalzip VAPOUR CONTROL LAYER (V.C.L)
Kalzip VCL sealed at laps with Kalzip sealant tape
 - ③ HALTER CLIPS
 - ④ Kalzip THERMAL INSULATION.
Kalzip Glass Fibre Insulating Quilt .
Compressed From 180mm to 165mm
 - ⑤ TOP SHEET
Kalzip 65/400 Profile
Finish as Specification
 - ⑥ GUTTER SYSTEM
Membrane Lined Composite Insulated Gutter Laid Level on Rails (By Others), Jointed as Manufacturers Recommendations. Levelling Angles and Bullnose Supports Fixed at 600mm C/C's and Isolated as Necessary
 - ⑦ EAVES COMPONENTS
Extruded Aluminium Eaves Drip Angle Riveted to Sheets At Max 400mm C/C's c/w Profiled Foam Filler Block

Revision	Drawn	CHK'D	Date	Description
----------	-------	-------	------	-------------



A Tata Steel Enterprise

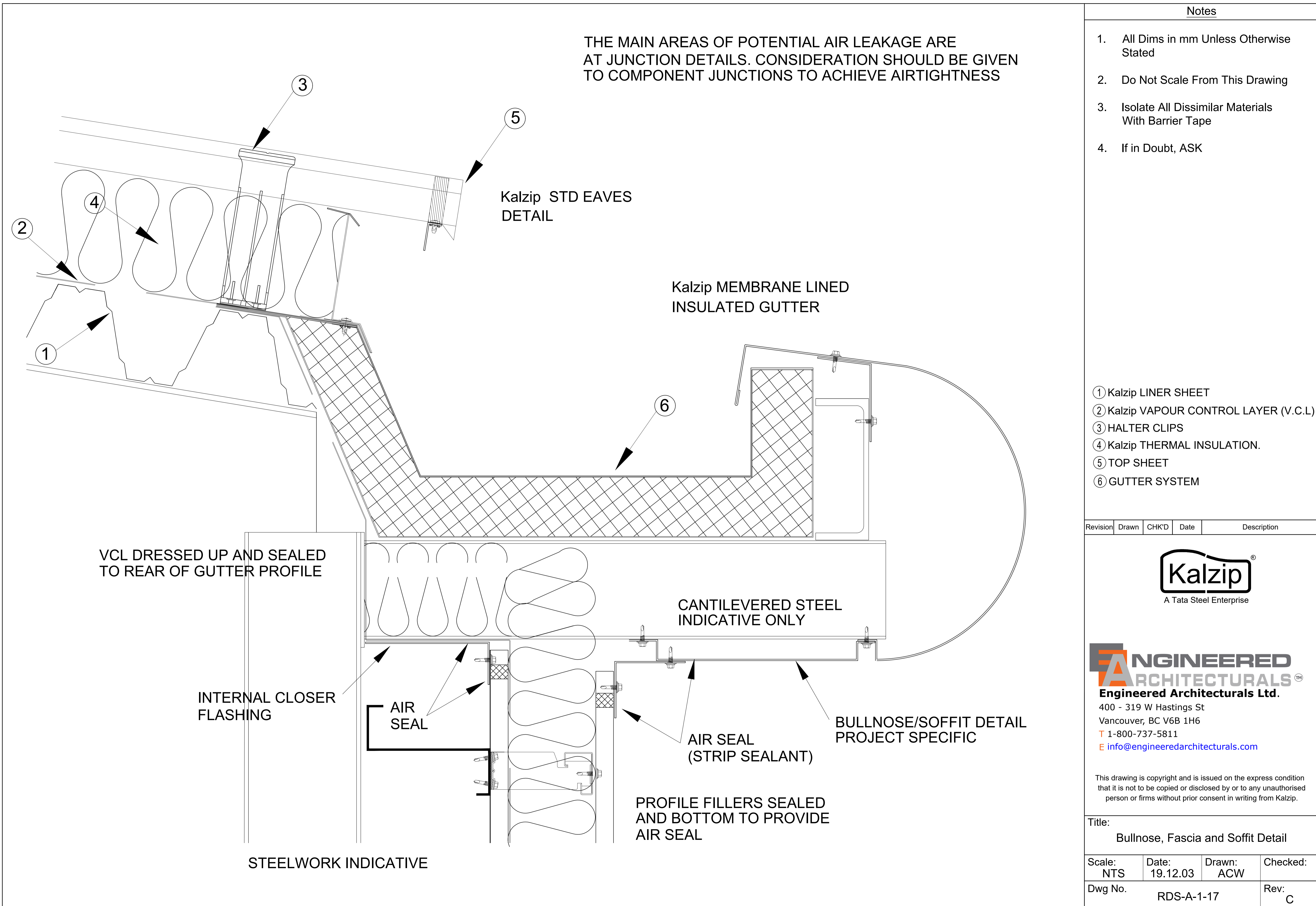


Engineered Architecturals Ltd.
400 - 319 W Hastings St
Vancouver, BC V6B 1H6
T 1-800-737-5811
E info@engineeredarchitecturals.com

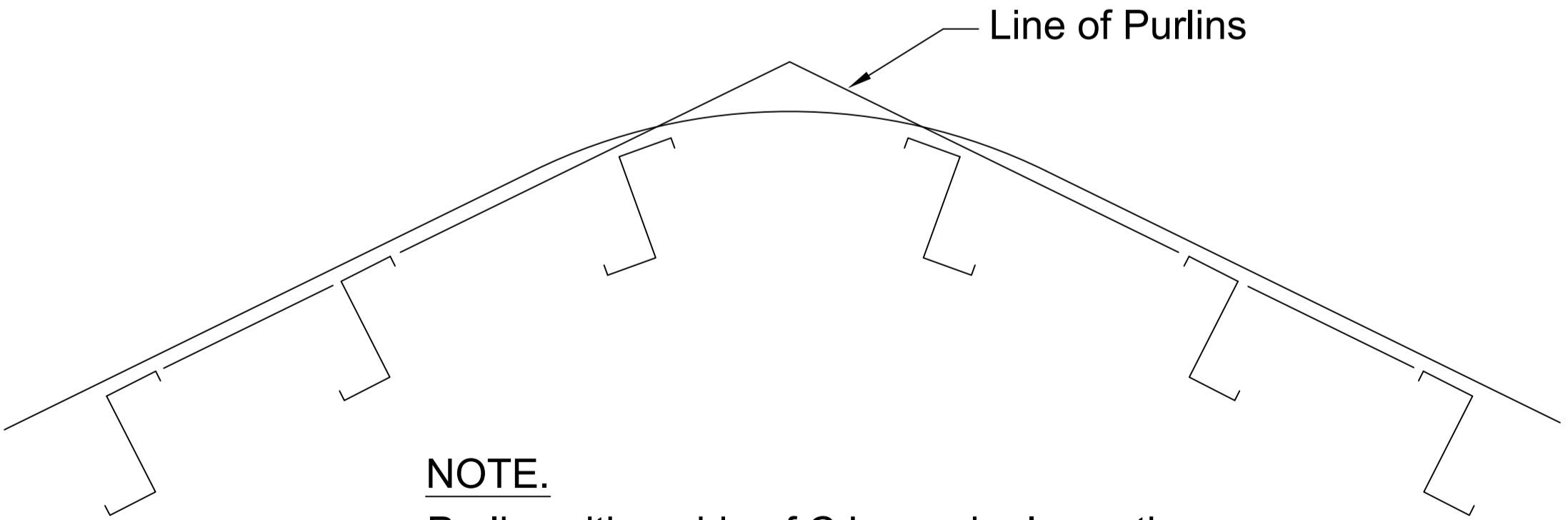
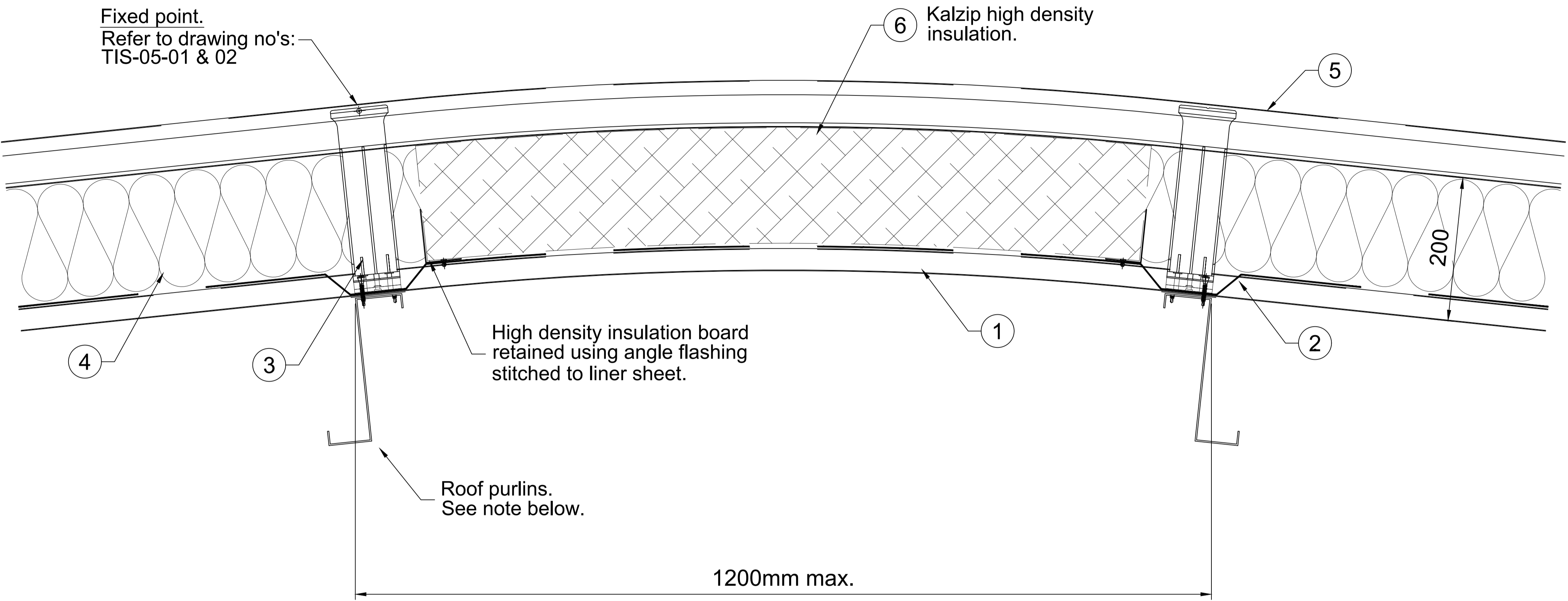
This drawing is copyright and is issued on the express condition that it is not to be copied or disclosed by or to any unauthorised person or firms without prior consent in writing from Kalzip.

Title: Bullnose Fascia and Soffit Detail Composite Gutter

Scale: NTS	Date: 19.12.03	Drawn: AW	Checked:
Dwg No. RDS-A-1-09	Rev: C		



Fixed point.
Refer to drawing no's:
TIS-05-01 & 02



NOTE.
Purlins either side of C.L may be lower than
and pitched different to line of other purlins if
crown portion of roof is curved

Notes

1. All Dims in mm Unless Otherwise Stated
2. Do Not Scale From This Drawing
3. Isolate All Dissimilar Materials With Barrier Tape
4. If in Doubt, ASK

- ① Kalzip LINER SHEET
- ② Kalzip VAPOUR CONTROL LAYER (V.C.L)
- ③ HALTER CLIPS
- ④ Kalzip THERMAL INSULATION.
- ⑤ TOP SHEET
- ⑥ HIGH DENSITY INSULATION

Revision	Drawn	CHK'D	Date	Description
----------	-------	-------	------	-------------

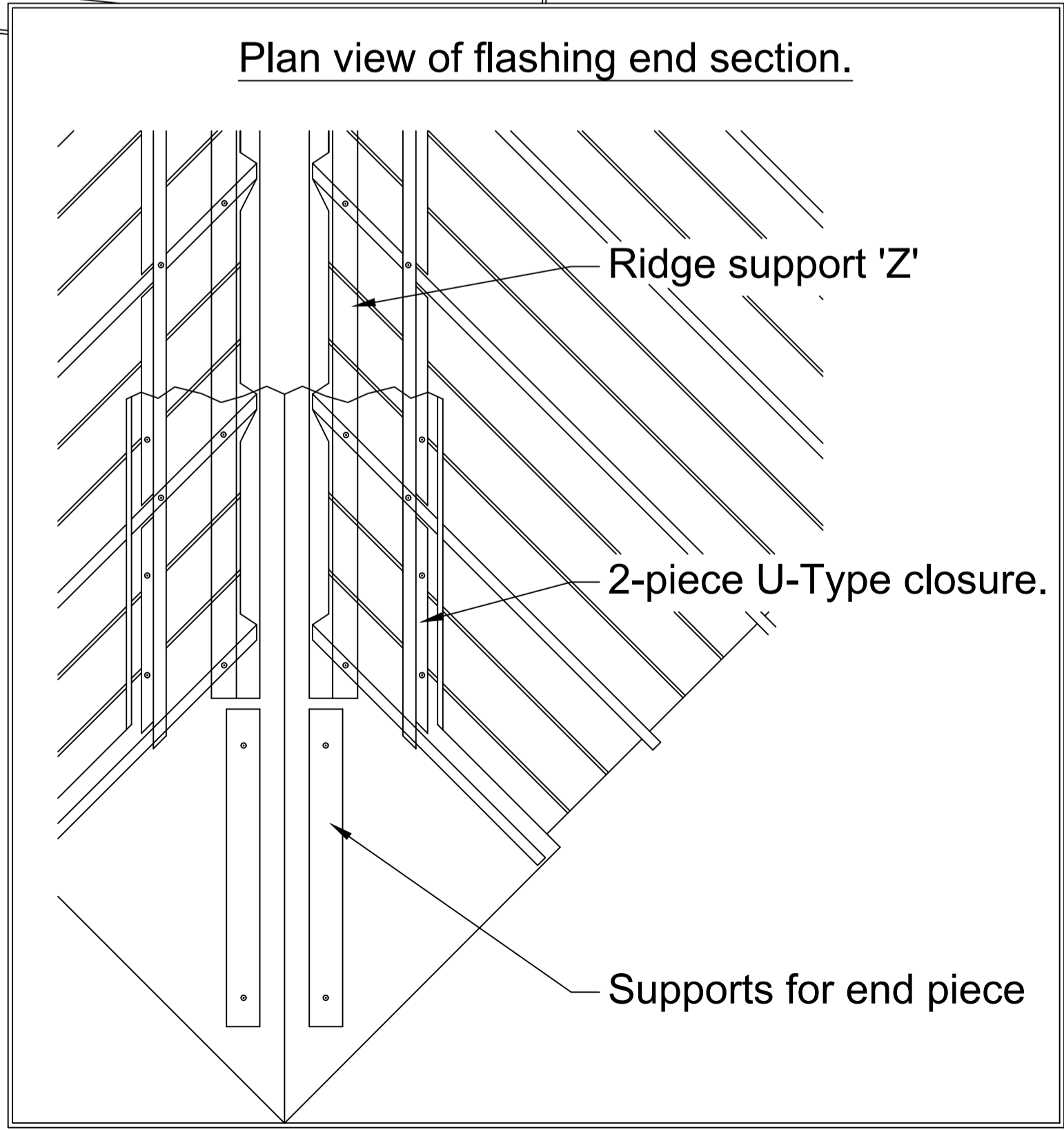
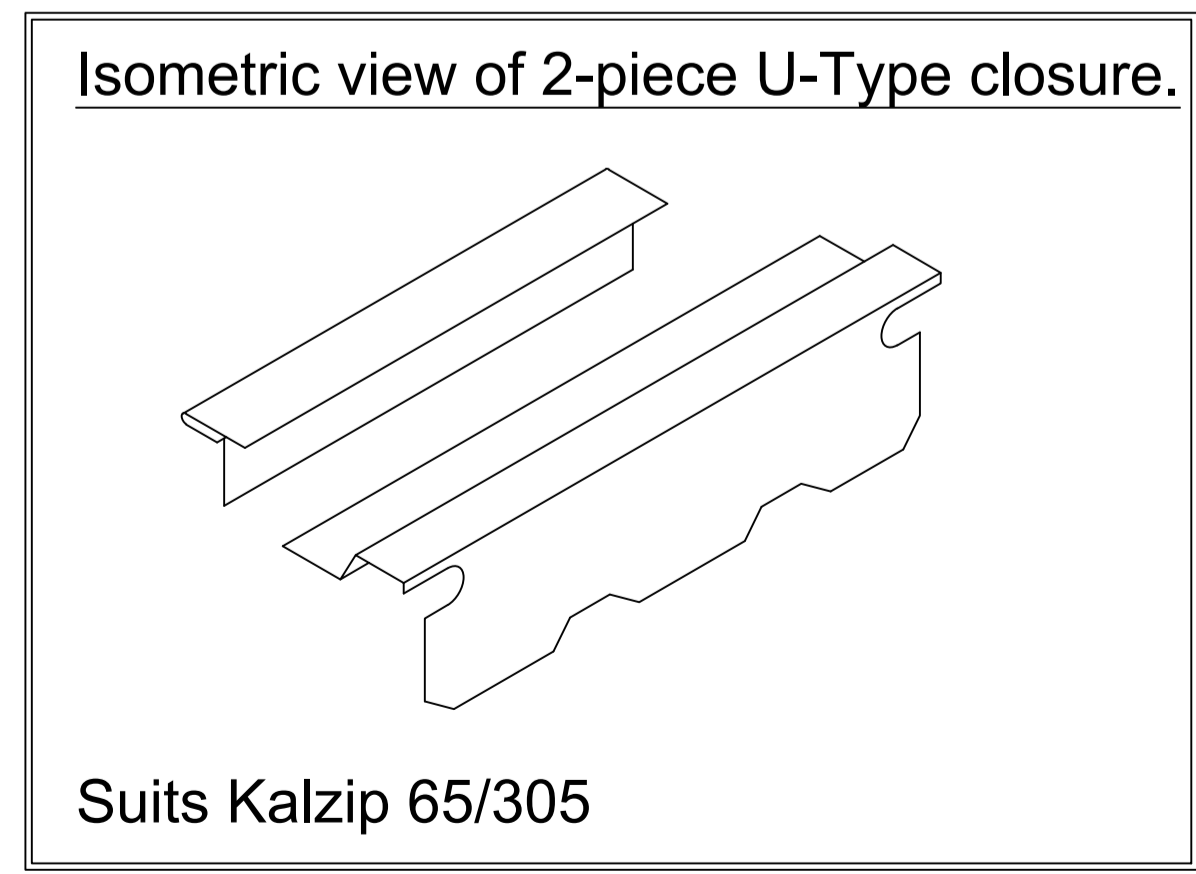
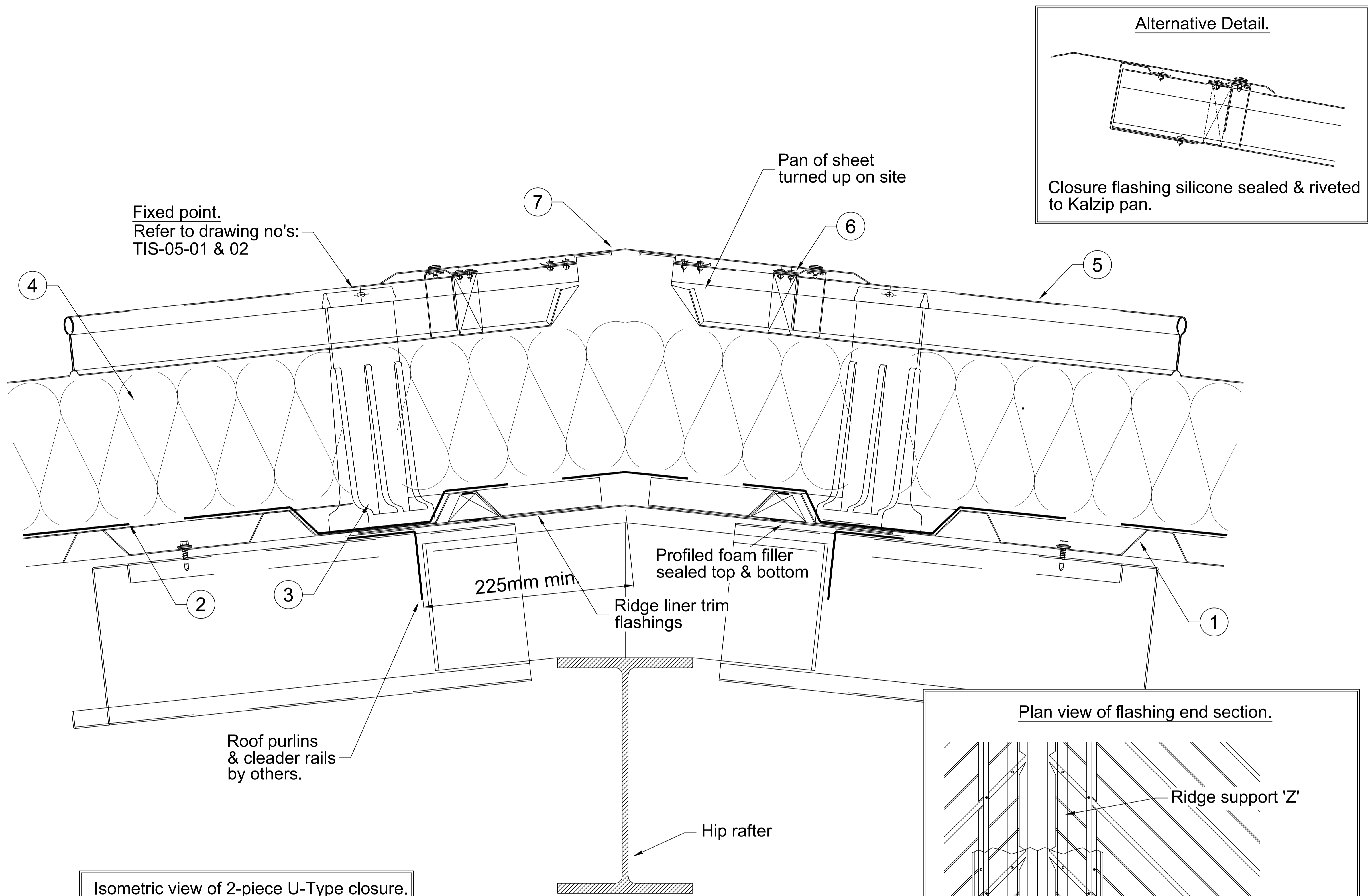


ENGINEERED ARCHITECTURALS
Engineered Architecturals Ltd.
400 - 319 W Hastings St
Vancouver, BC V6B 1H6
T 1-800-737-5811
E info@engineeredarchitecturals.com

This drawing is copyright and is issued on the express condition that it is not to be copied or disclosed by or to any unauthorised person or firms without prior consent in writing from Kalzip.

Title:
Curved Ridge Detail

Scale: NTS	Date: 19.12.03	Drawn: AW	Checked:
Dwg No. RDS-A-0-09	Rev: B		



Notes

1. All Dims in mm Unless Otherwise Stated
2. Do Not Scale From This Drawing
3. Isolate All Dissimilar Materials With Barrier Tape
4. If in Doubt, ASK

- ① Kalzip LINER SHEET
- ② Kalzip VAPOUR CONTROL LAYER (V.C.L)
- ③ HALTER CLIPS
- ④ Kalzip THERMAL INSULATION.
- ⑤ TOP SHEET
- ⑥ RIDGE COMPONENTS
- ⑦ RIDGE FLASHING

Revision	Drawn	CHK'D	Date	Description
----------	-------	-------	------	-------------

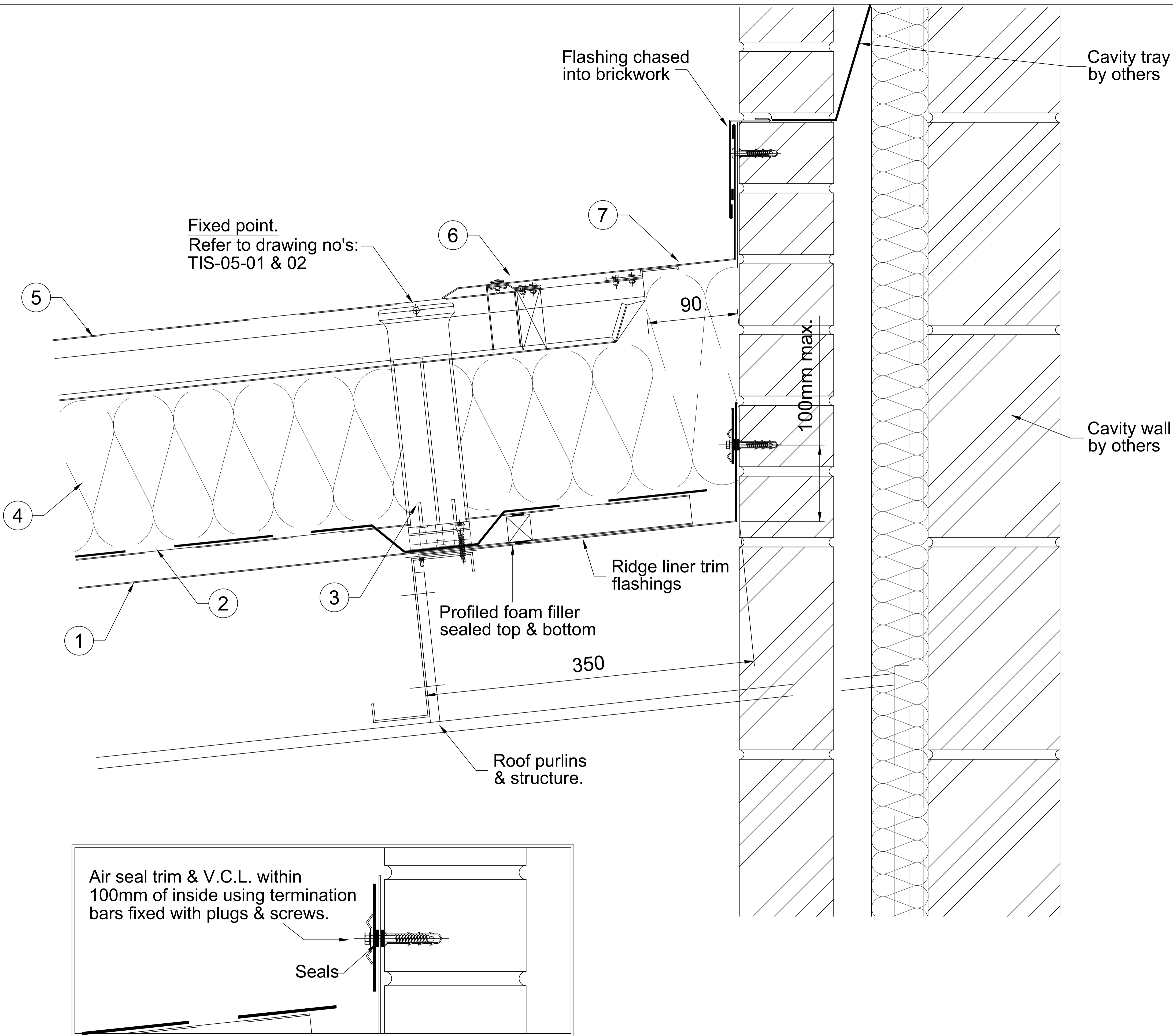


ENGINEERED ARCHITECTURALS
Engineered Architecturals Ltd.
400 - 319 W Hastings St
Vancouver, BC V6B 1H6
T 1-800-737-5811
E info@engineeredarchitecturals.com

This drawing is copyright and is issued on the express condition that it is not to be copied or disclosed by or to any unauthorised person or firms without prior consent in writing from Kalzip.

Title:
Insulated Hipped Ridge Detail

Scale: NTS	Date: 19.12.03	Drawn: AW	Checked:
Dwg No.	RDS-A-0-01	Rev:	B



Notes

1. All Dims in mm Unless Otherwise Stated
2. Do Not Scale From This Drawing
3. Isolate All Dissimilar Materials With Barrier Tape
4. If in Doubt, ASK

- ① Kalzip LINER SHEET
- ② Kalzip VAPOUR CONTROL LAYER (V.C.L.)
- ③ HALTER CLIPS
- ④ Kalzip THERMAL INSULATION.
- ⑤ TOP SHEET
- ⑥ RIDGE COMPONENTS
- ⑦ RIDGE FLASHING

Revision	Drawn	CHK'D	Date	Description
----------	-------	-------	------	-------------

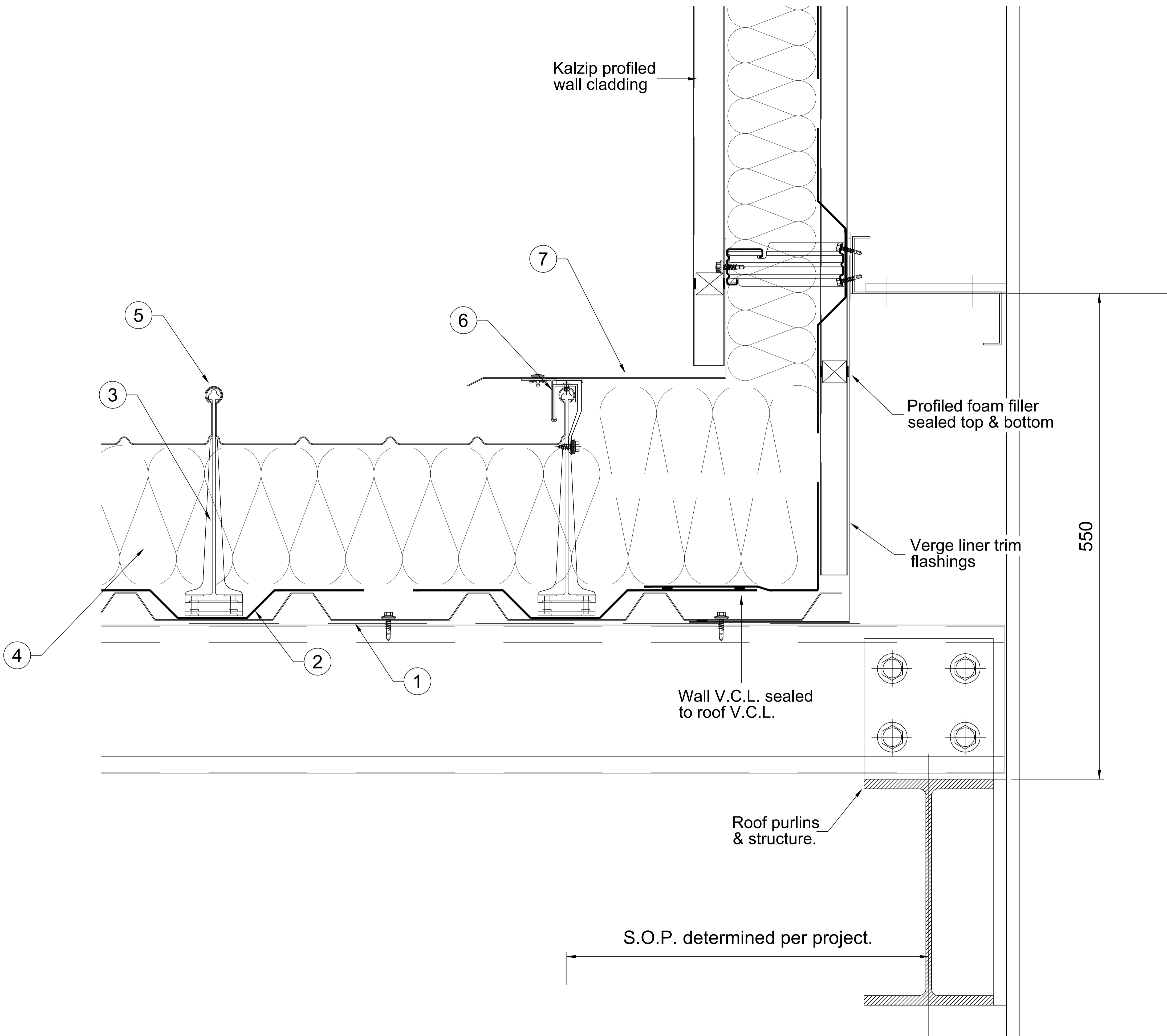


ENGINEERED ARCHITECTURALS
Engineered Architecturals Ltd.
400 - 319 W Hastings St
Vancouver, BC V6B 1H6
T 1-800-737-5811
E info@engineeredarchitecturals.com

This drawing is copyright and is issued on the express condition that it is not to be copied or disclosed by or to any unauthorised person or firms without prior consent in writing from Kalzip.

Title: Insulated Monoridge Abutment To Blockwork

Scale: NTS	Date: 19.12.03	Drawn: AW	Checked:
Dwg No. RDS-A-0-04	Rev: B		



Notes

- 1. All Dims in mm Unless Otherwise Stated
- 2. Do Not Scale From This Drawing
- 3. Isolate All Dissimilar Materials With Barrier Tape
- 4. If in Doubt, ASK

- ① Kalzip LINER SHEET
- ② Kalzip VAPOUR CONTROL LAYER (V.C.L.)
- ③ HALTER CLIPS
- ④ Kalzip THERMAL INSULATION.
- ⑤ TOP SHEET
- ⑥ VERGE COMPONENT
- ⑦ VERGE FLASHING

Revision	Drawn	CHK'D	Date	Description
----------	-------	-------	------	-------------

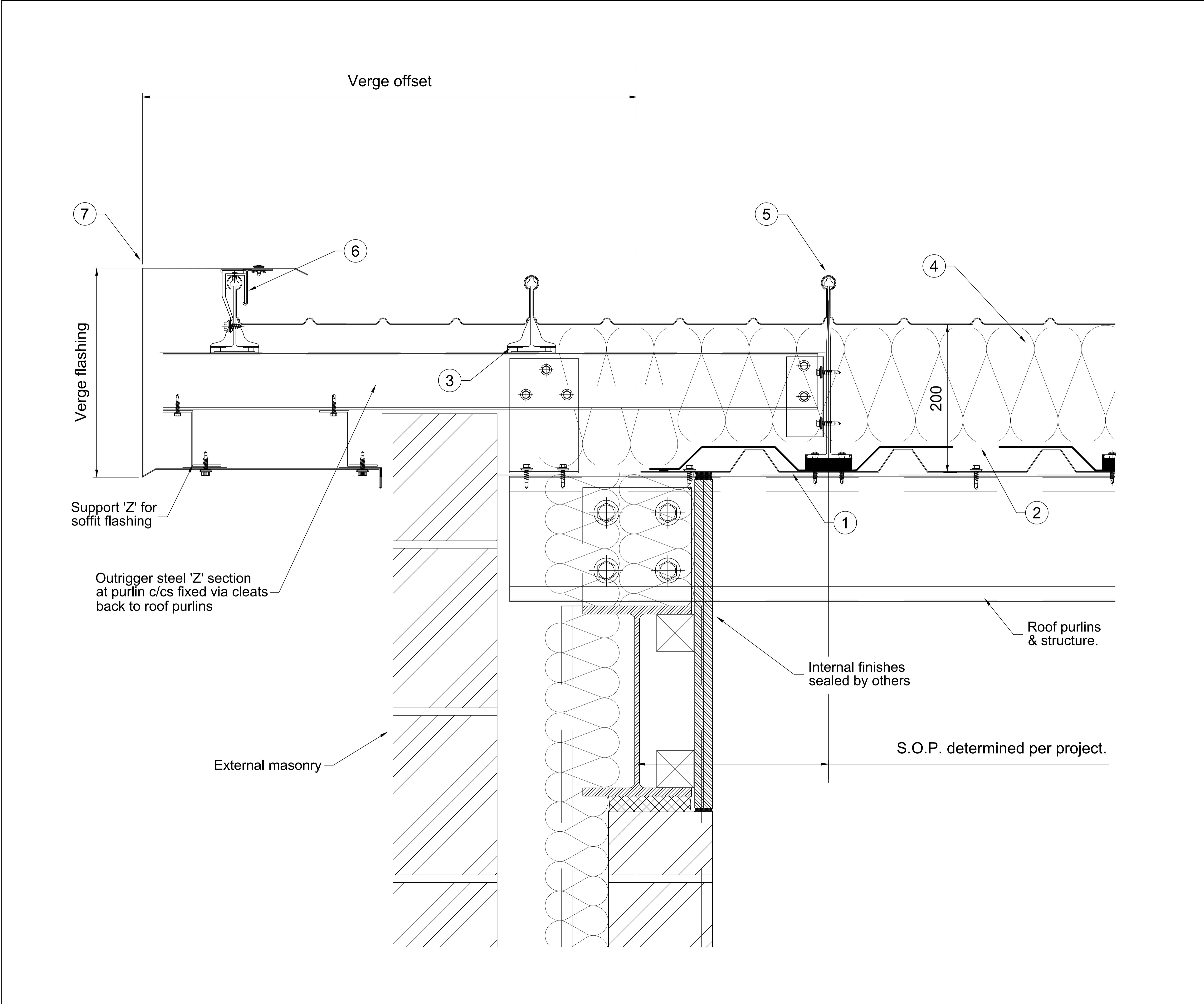


ENGINEERED ARCHITECTURALS
Engineered Architecturals Ltd.
400 - 319 W Hastings St
Vancouver, BC V6B 1H6
T 1-800-737-5811
E info@engineeredarchitecturals.com

This drawing is copyright and is issued on the express condition that it is not to be copied or disclosed by or to any unauthorised person or firms without prior consent in writing from Kalzip.

Title:
Insulated Verge Abutment to Cladding

Scale: NTS	Date: 21.12.03	Drawn: AW	Checked:
Dwg No. RDS-A-2-03			Rev: B



Notes

1.

All Dims in mm Unless Otherwise Stated

2.

Do Not Scale From This Drawing


3.

Isolate All Dissimilar Materials With Barrier Tape


4.

If in Doubt, ASK

Revision	Drawn	CHK'D	Date	Description



Kalzip®
A Tata Steel Enterprise



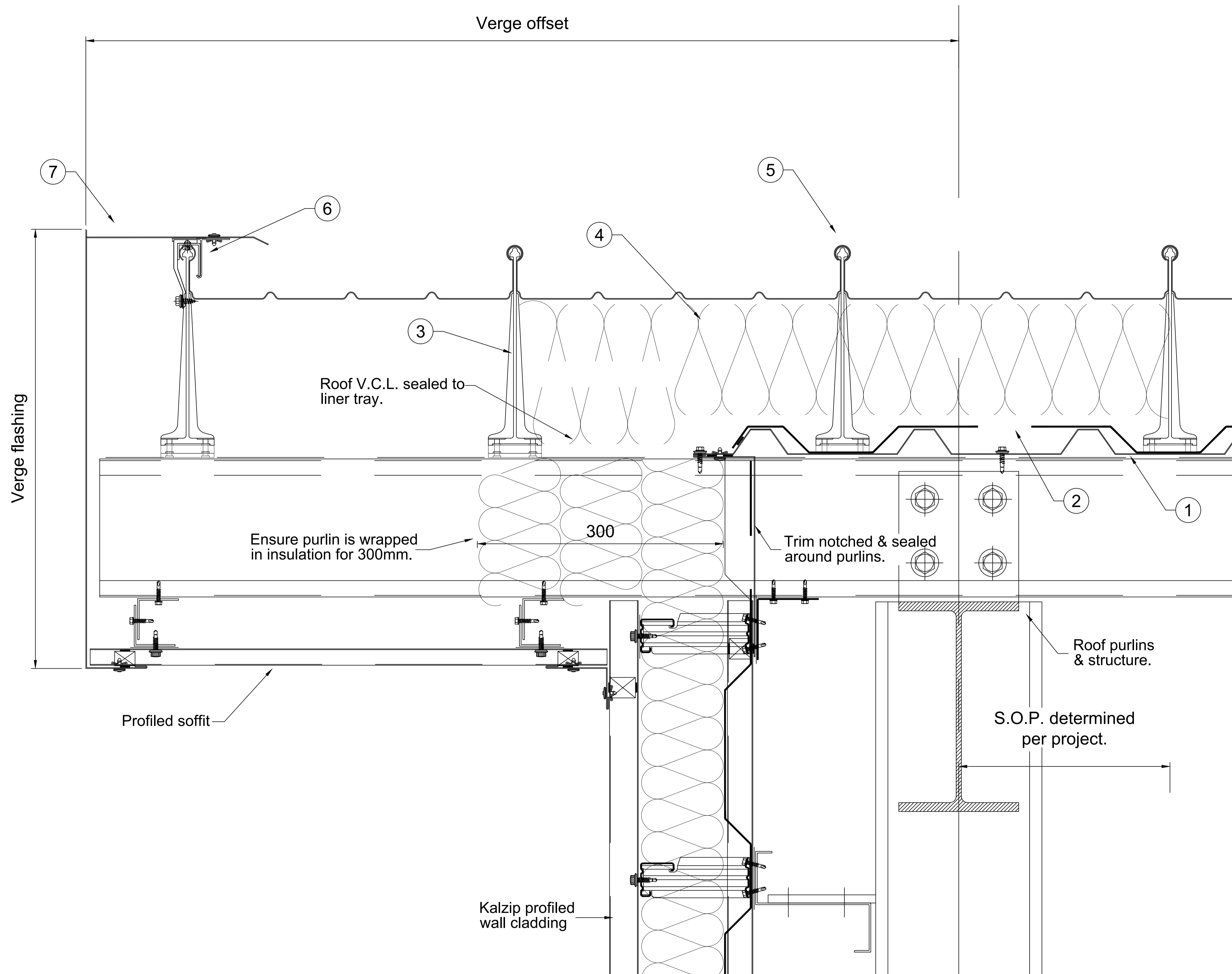
**ENGINEERED
ARCHITECTURALS™**
Engineered Architecturals Ltd.
400 - 319 W Hastings St
Vancouver, BC V6B 1H6
T 1-800-737-5811
E info@engineeredarchitecturals.com

This drawing is copyright and is issued on the express condition that it is not to be copied or disclosed by or to any unauthorised person or firms without prior consent in writing from Kalzip.

Title:

Insulated Verge Overhang to Masonry

Scale:	Date:	Drawn:	Checked:
NTS	21.12.03	AW	
Dwg No.	RDS-A-2-010		Rev: B



Notes

1. All Dims in mm Unless Otherwise Stated
2. Do Not Scale From This Drawing
3. Isolate All Dissimilar Materials With Barrier Tape
4. If in Doubt, ASK

- ① Kalzip LINER SHEET
- ② Kalzip VAPOUR CONTROL LAYER (V.C.L)
- ③ HALTER CLIPS
- ④ Kalzip THERMAL INSULATION.
- ⑤ TOP SHEET
- ⑥ VERGE COMPONENTS
- ⑦ VERGE FLASHING

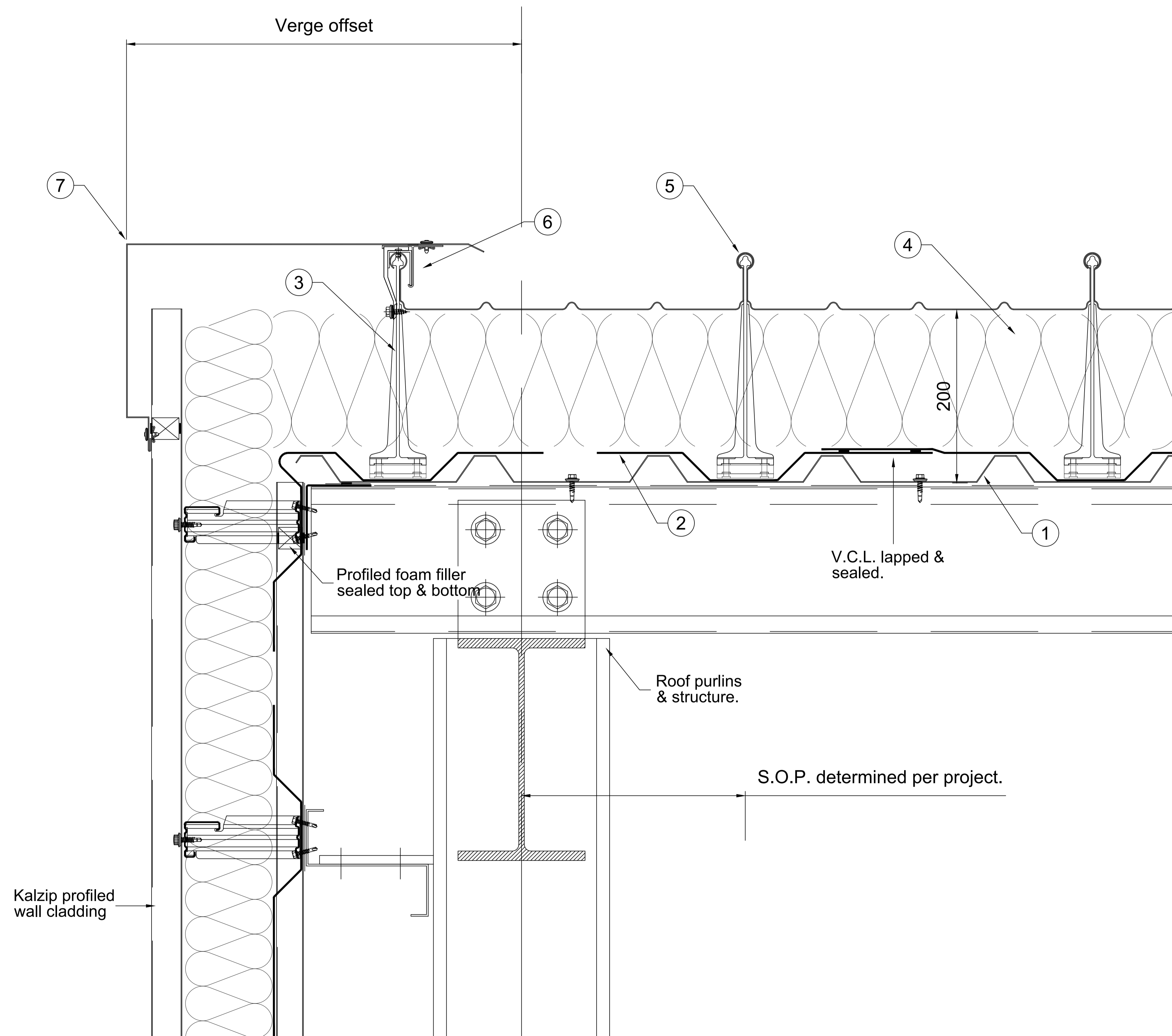
Revision	Drawn	CHK'D	Date	Description
----------	-------	-------	------	-------------



ENGINEERED ARCHITECTURALS™
Engineered Architecturals Ltd.
400 - 319 W Hastings St
Vancouver, BC V6B 1H6
T 1-800-737-5811
E info@engineeredarchitecturals.com

This drawing is copyright and is issued on the express condition that it is not to be copied or disclosed by or to any unauthorised person or firms without prior consent in writing from Kalzip.

Title: Insulated Verge Overhang			
Scale: NTS	Date: 21.12.03	Drawn: AW	Checked:
Dwg No. RDS-A-2-08	Rev: B		

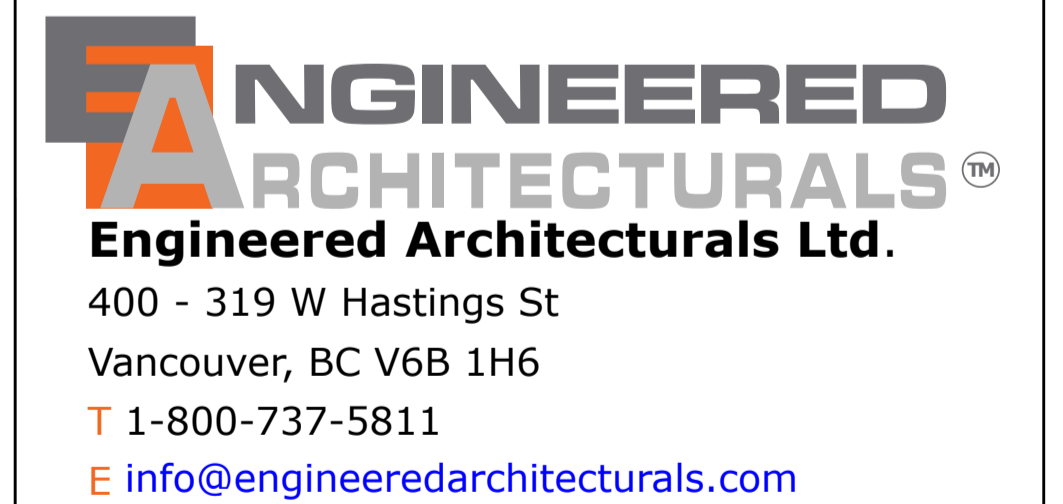


Notes

1. All Dims in mm Unless Otherwise Stated
2. Do Not Scale From This Drawing
3. Isolate All Dissimilar Materials With Barrier Tape
4. If in Doubt, ASK

- ① Kalzip LINER SHEET
- ② Kalzip VAPOUR CONTROL LAYER (V.C.L.)
- ③ HALTER CLIPS
- ④ Kalzip THERMAL INSULATION.
- ⑤ TOP SHEET
- ⑥ VERGE COMPONENTS
- ⑦ VERGE FLASHING

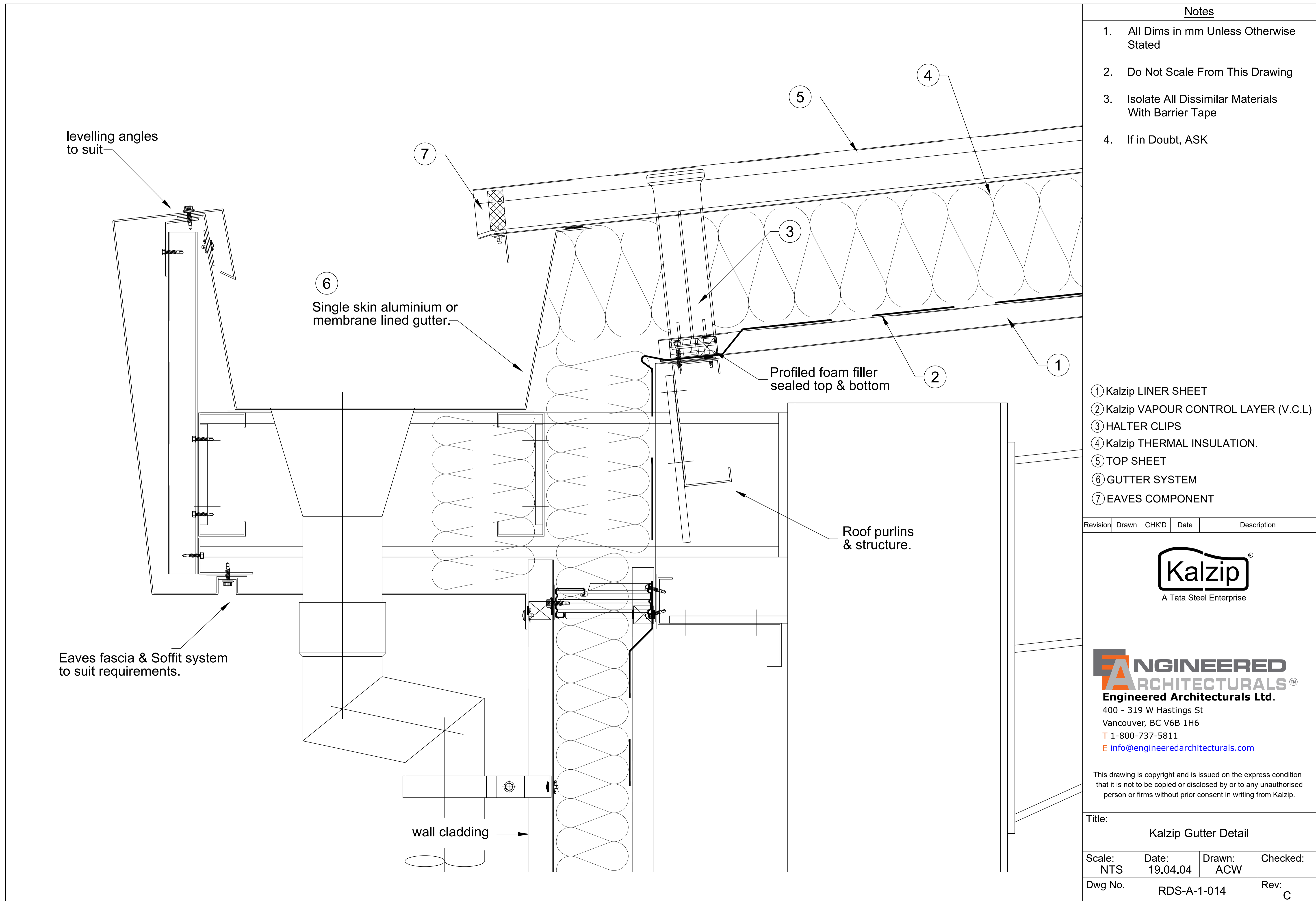
Revision	Drawn	CHK'D	Date	Description
----------	-------	-------	------	-------------



This drawing is copyright and is issued on the express condition that it is not to be copied or disclosed by or to any unauthorised person or firms without prior consent in writing from Kalzip.

Title:
Insulated Verge to Gable End Cladding

Scale: NTS	Date: 21.12.03	Drawn: AW	Checked:
Dwg No.	RDS-A-2-04	Rev:	B

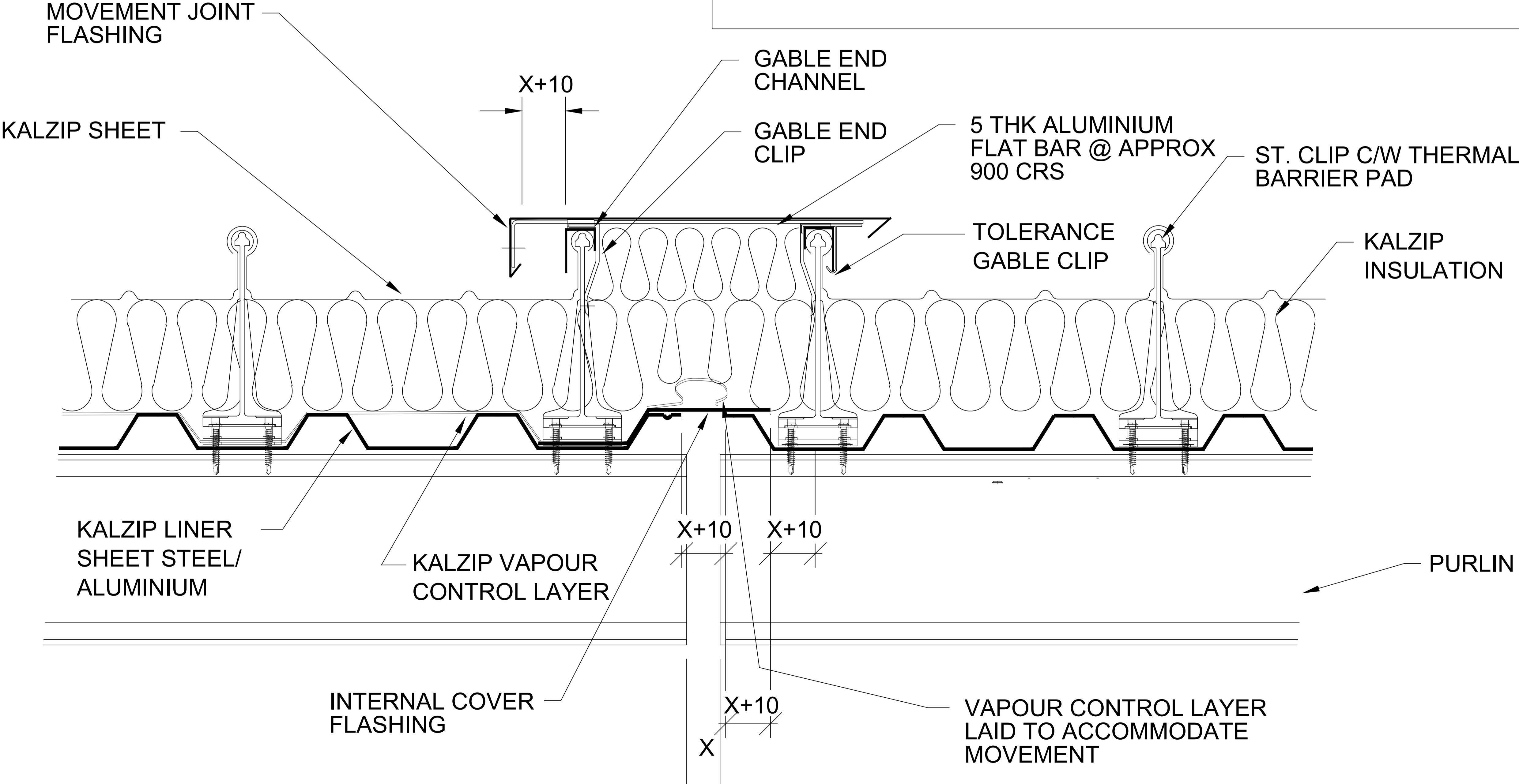
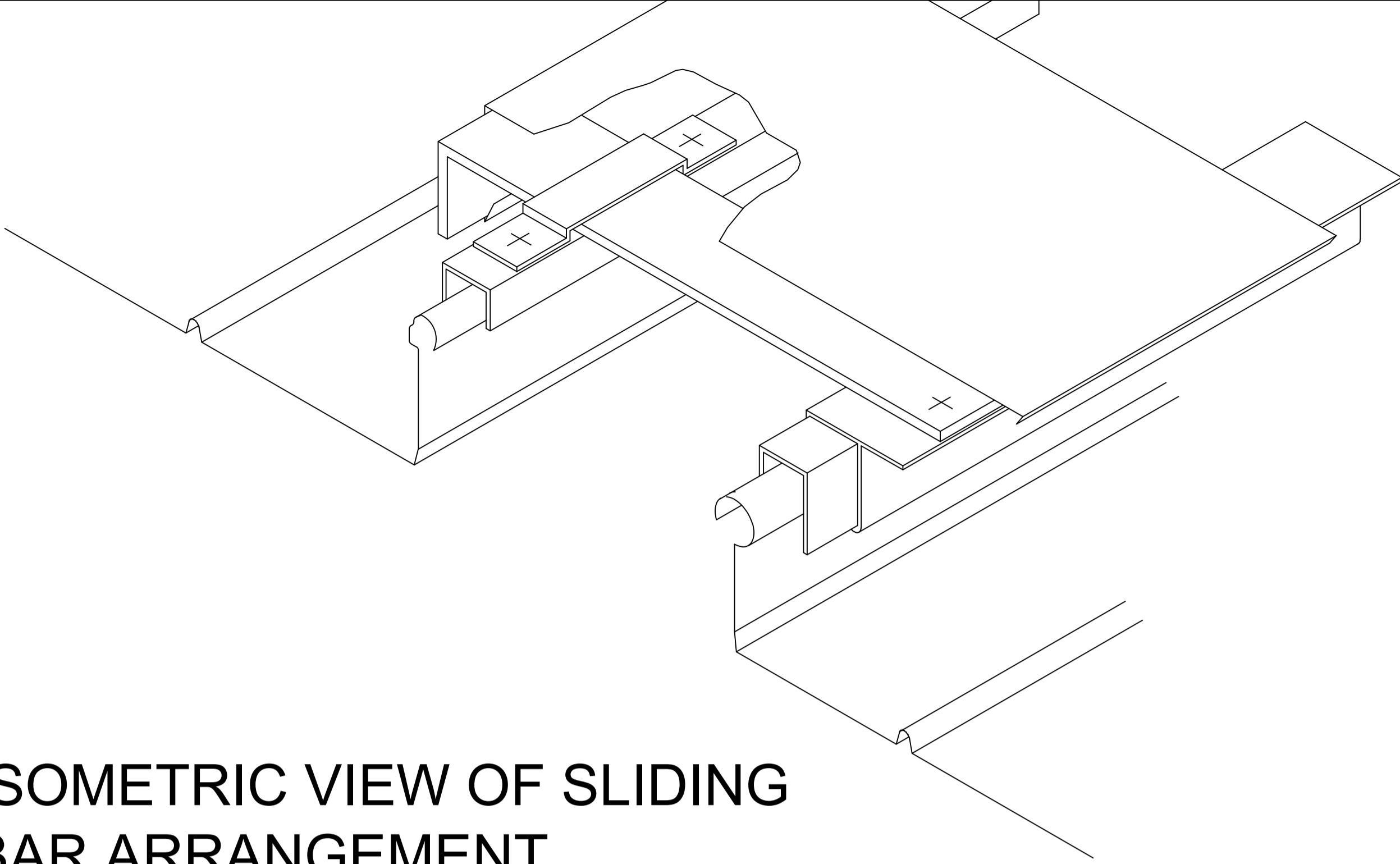


Notes

- 1. All Dims in mm Unless Otherwise Stated
- 2. Do Not Scale From This Drawing
- 3. Isolate All Dissimilar Materials With Barrier Tape
- 4. If in Doubt, ASK

NOTE.
±X = ALLOWABLE MOVEMENT

ISOMETRIC VIEW OF SLIDING
BAR ARRANGEMENT



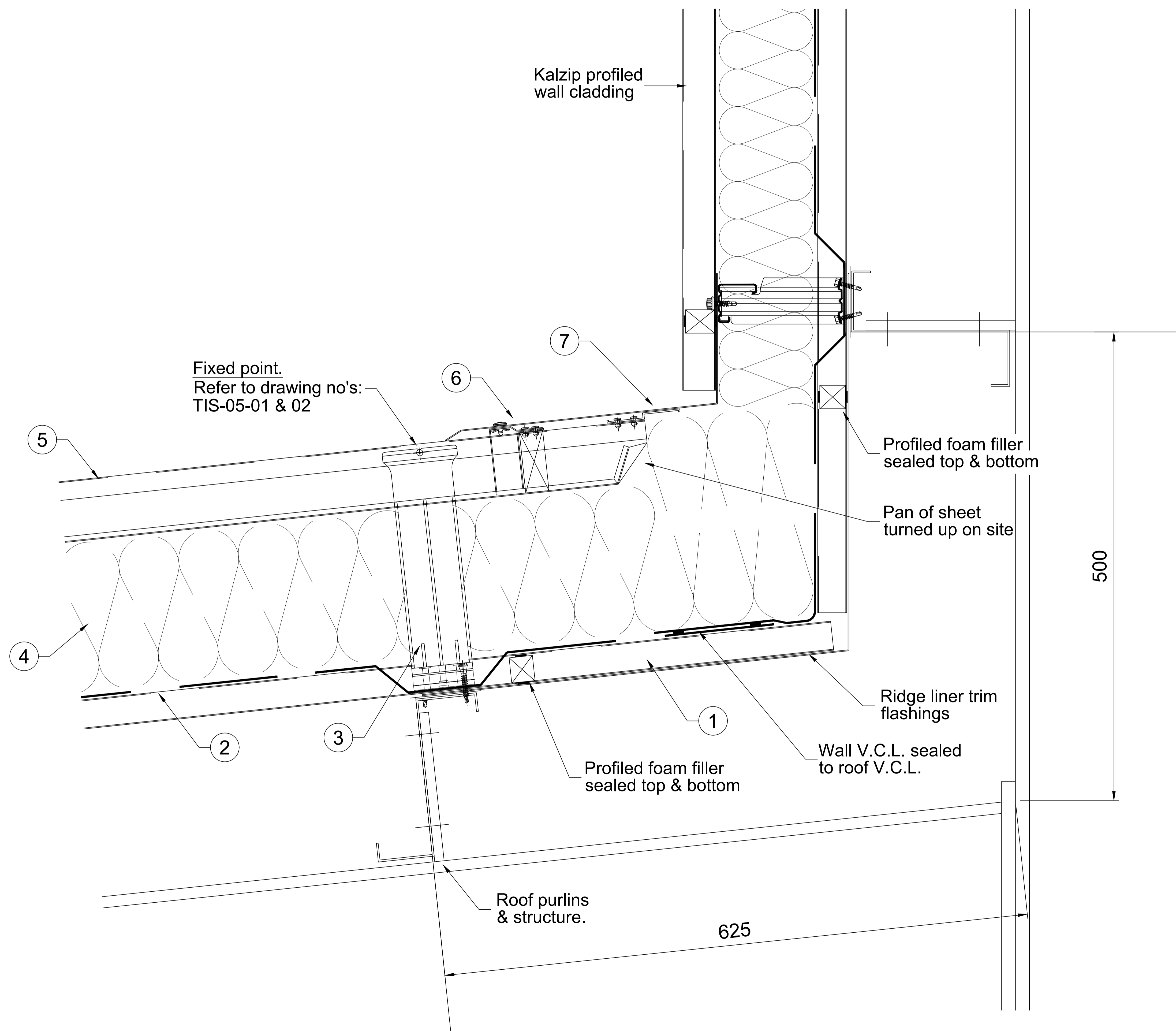
Revision	Drawn	CHK'D	Date	Description
----------	-------	-------	------	-------------



ENGINEERED ARCHITECTURALS
Engineered Architecturals Ltd.
400 - 319 W Hastings St
Vancouver, BC V6B 1H6
T 1-800-737-5811
E info@engineeredarchitecturals.com

This drawing is copyright and is issued on the express condition that it is not to be copied or disclosed by or to any unauthorised person or firms without prior consent in writing from Kalzip.

Title: Kalzip Movement Joint Detail				
Scale: NTS	Date: 14.04.03	Drawn: ACW	Checked:	
Dwg No. RDS-MISC-0-07				Rev: E



Notes

1. All Dims in mm Unless Otherwise Stated
2. Do Not Scale From This Drawing
3. Isolate All Dissimilar Materials With Barrier Tape
4. If in Doubt, ASK

- ① Kalzip LINER SHEET
- ② Kalzip VAPOUR CONTROL LAYER (V.C.L.)
- ③ HALTER CLIPS
- ④ Kalzip THERMAL INSULATION.
- ⑤ TOP SHEET
- ⑥ RIDGE COMPONENTS
- ⑦ RIDGE FLASHING

Revision	Drawn	CHK'D	Date	Description
----------	-------	-------	------	-------------

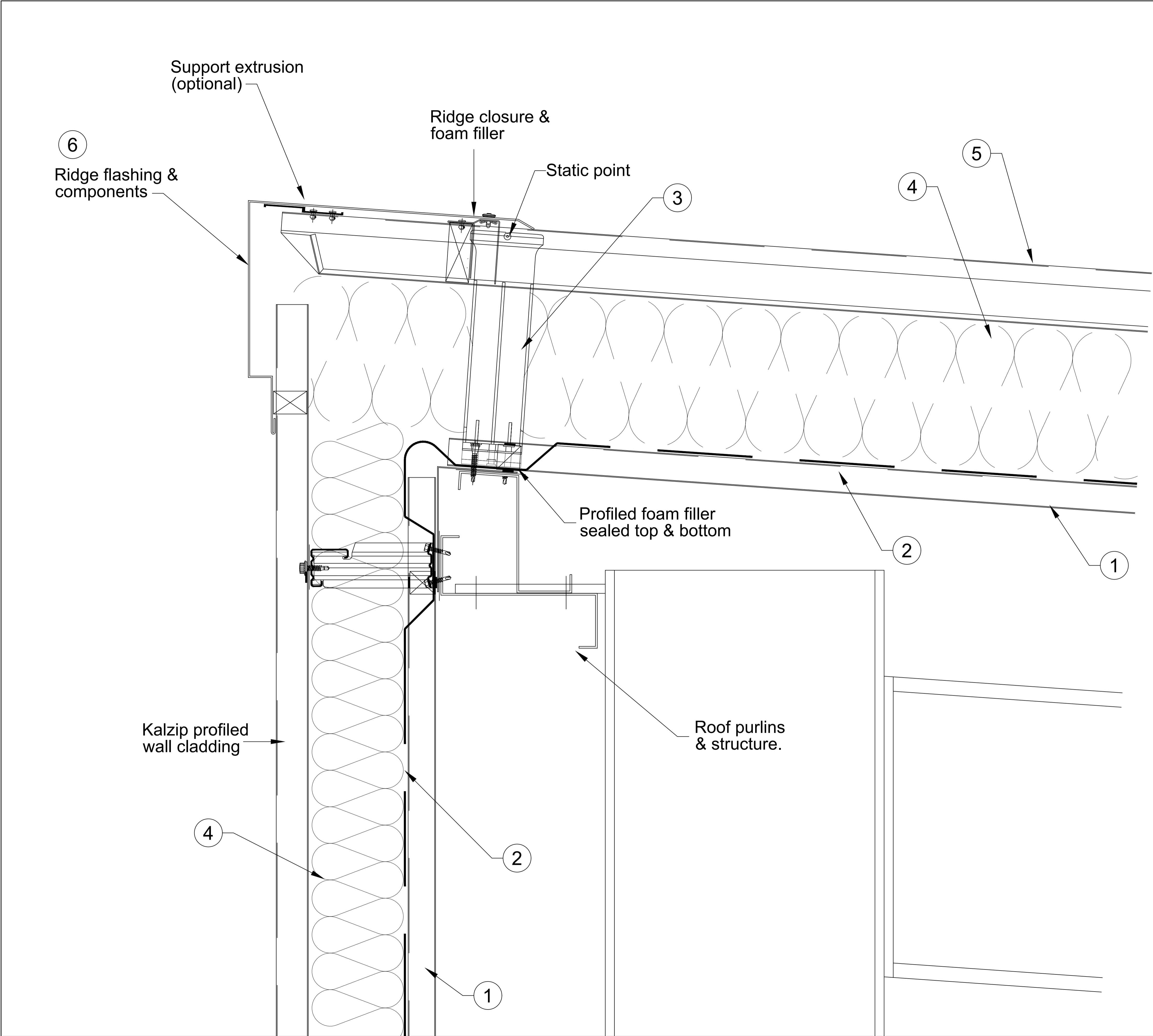


ENGINEERED ARCHITECTURALS™
Engineered Architecturals Ltd.
400 - 319 W Hastings St
Vancouver, BC V6B 1H6
T 1-800-737-5811
E info@engineeredarchitecturals.com

This drawing is copyright and is issued on the express condition that it is not to be copied or disclosed by or to any unauthorised person or firms without prior consent in writing from Kalzip.

Title:
Monoridge Abutment to Cladding

Scale: NTS	Date: 19.12.03	Drawn: AW	Checked:
Dwg No. RDS-A-0-05	Rev: B		



Notes

- 1. All Dims in mm Unless Otherwise Stated
- 2. Do Not Scale From This Drawing
- 3. Isolate All Dissimilar Materials With Barrier Tape
- 4. If in Doubt, ASK

- ① Kalzip LINER SHEET
- ② Kalzip VAPOUR CONTROL LAYER (V.C.L)
- ③ HALTER CLIPS
- ④ Kalzip THERMAL INSULATION.
- ⑤ TOP SHEET
- ⑥ RIDGE COMPONENTS
- ⑦ RIDGE FLASHING

Revision	Drawn	CHK'D	Date	Description
----------	-------	-------	------	-------------

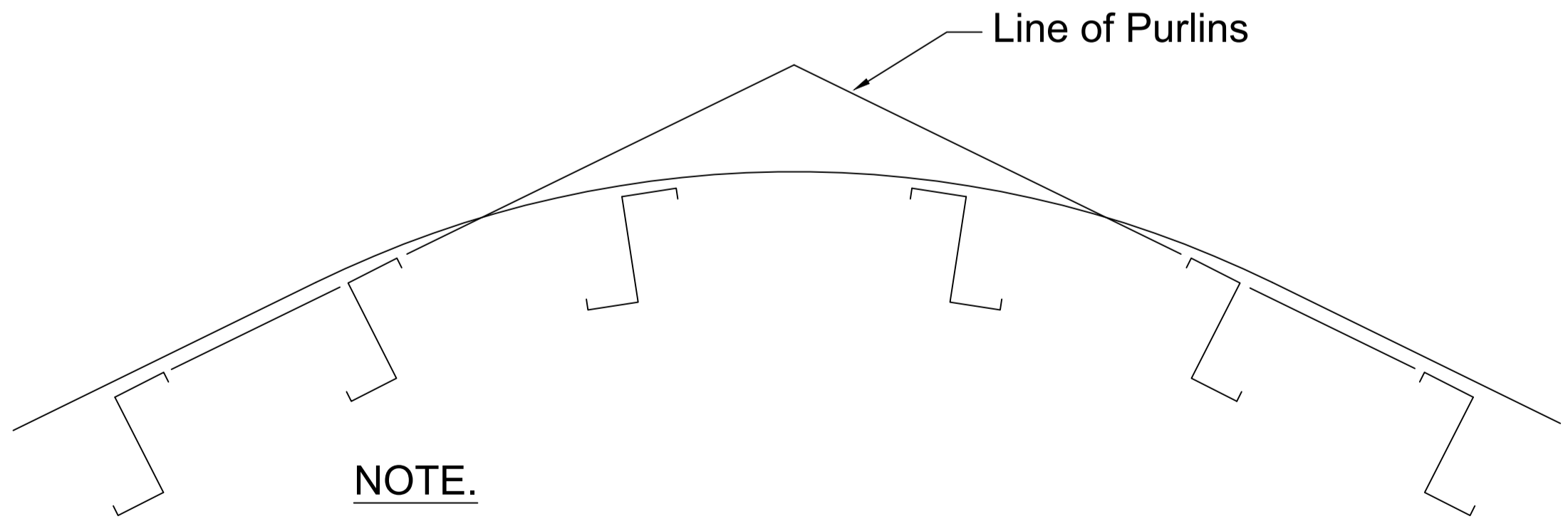
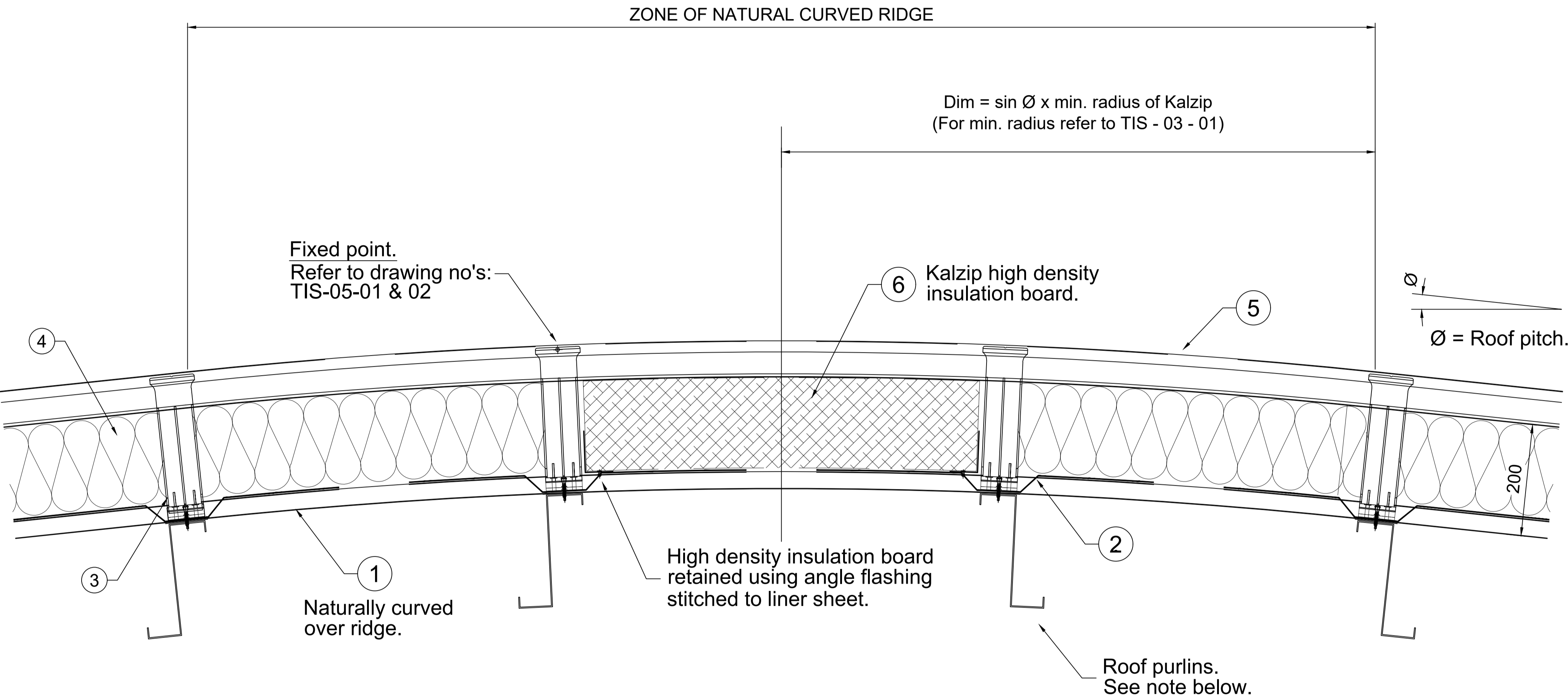


ENGINEERED ARCHITECTURALS™
Engineered Architecturals Ltd.
400 - 319 W Hastings St
Vancouver, BC V6B 1H6
T 1-800-737-5811
E info@engineeredarchitecturals.com

This drawing is copyright and is issued on the express condition that it is not to be copied or disclosed by or to any unauthorised person or firms without prior consent in writing from Kalzip.

Title: Monoridge Detail			
Scale: NTS	Date: 19.12.03	Drawn: AW	Checked:
Dwg No. RDS-A-0-07	Rev: B		

Stated calculation results are dependent on components being as shown



NOTE.
Purlins either side of C.L may be lower than and pitched different to line of other purlins if crown portion of roof is curved

Notes

1. All Dims in mm Unless Otherwise Stated
2. Do Not Scale From This Drawing
3. Isolate All Dissimilar Materials With Barrier Tape
4. If in Doubt, ASK

- ① Kalzip LINER SHEET
- ② Kalzip VAPOUR CONTROL LAYER (V.C.L)
- ③ HALTER CLIPS
- ④ Kalzip THERMAL INSULATION.
- ⑤ TOP SHEET
- ⑥ SPECIAL INSULATION

Revision	Drawn	CHK'D	Date	Description
----------	-------	-------	------	-------------

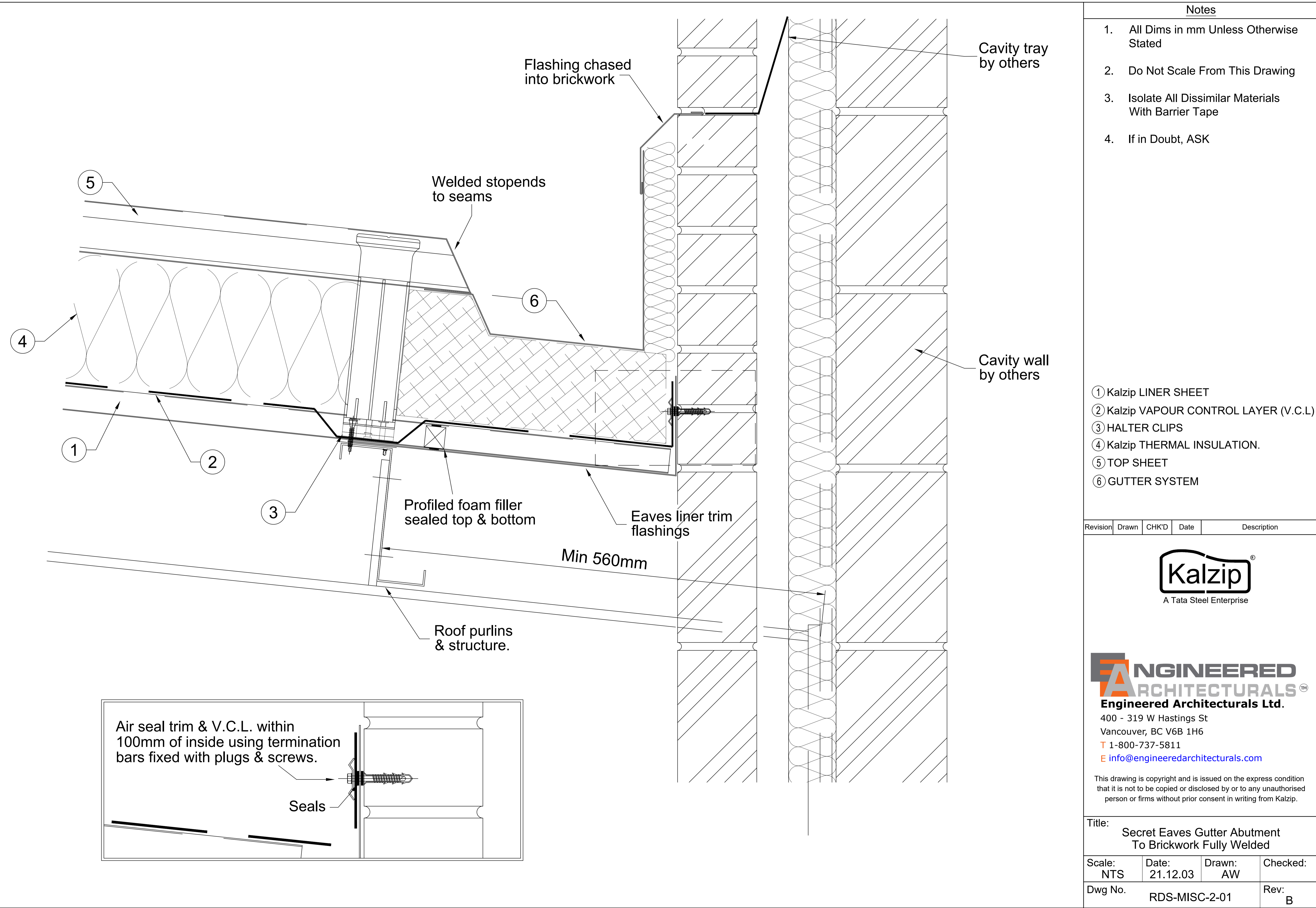


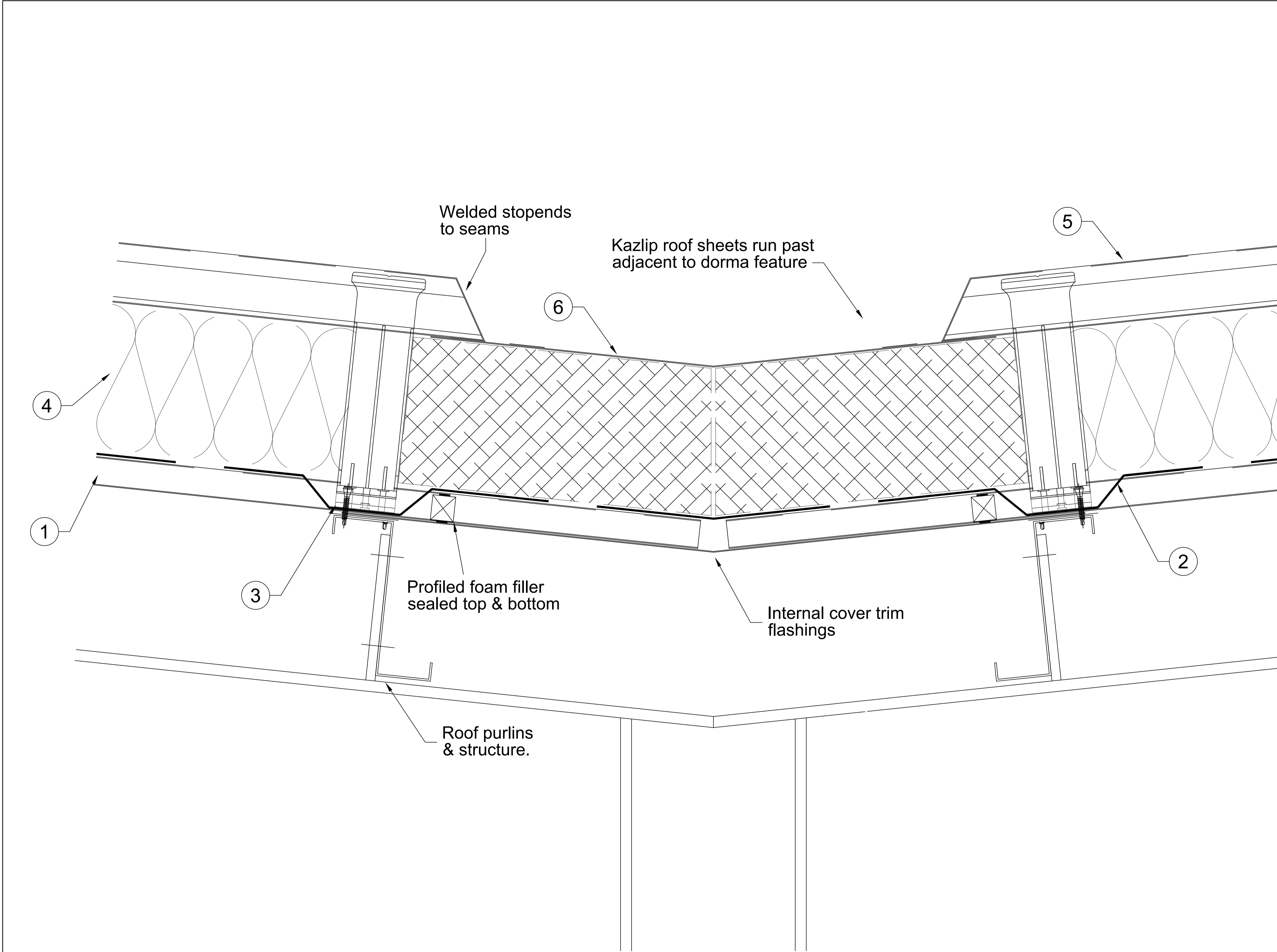
ENGINEERED ARCHITECTURALS™
Engineered Architecturals Ltd.
400 - 319 W Hastings St
Vancouver, BC V6B 1H6
T 1-800-737-5811
E info@engineeredarchitecturals.com

This drawing is copyright and is issued on the express condition that it is not to be copied or disclosed by or to any unauthorised person or firms without prior consent in writing from Kalzip.

Title:
Natural Curved Ridge Detail

Scale: NTS	Date: 19.12.03	Drawn: AW	Checked:
Dwg No. RDS-A-0-012	Rev: B		





Notes

1. All Dims in mm Unless Otherwise Stated
2. Do Not Scale From This Drawing
3. Isolate All Dissimilar Materials With Barrier Tape
4. If in Doubt, ASK

- ① Kalzip LINER SHEET
- ② Kalzip VAPOUR CONTROL LAYER (V.C.L.)
- ③ HALTER CLIPS
- ④ Kalzip THERMAL INSULATION.
- ⑤ TOP SHEET
- ⑥ GUTTER SYSTEM

Revision	Drawn	CHK'D	Date	Description
----------	-------	-------	------	-------------



ENGINEERED ARCHITECTURALS™
Engineered Architecturals Ltd.
400 - 319 W Hastings St
Vancouver, BC V6B 1H6
T 1-800-737-5811
E info@engineeredarchitecturals.com

This drawing is copyright and is issued on the express condition that it is not to be copied or disclosed by or to any unauthorised person or firms without prior consent in writing from Kalzip.

Title: Secret Eaves Gutter Abutment To Dorma Roof Feature

Scale: NTS	Date: 16.04.05	Drawn: AW	Checked:
Dwg No. RDS-MISC-3-04	Rev: B		